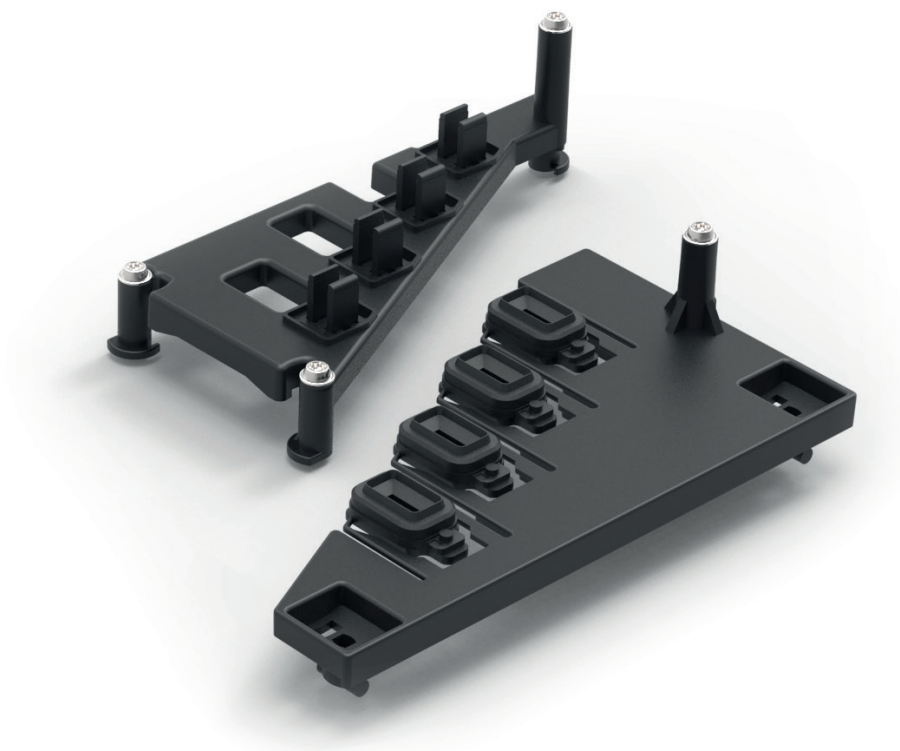


SERVICE ZONE

OPTION



**INSTALLATION & OPERATION
GUIDE**



INDEX

Description	5
Box contents	6
Previous requirements	7
Option card	8
Option installation	10
Verifying Option installation on Plotter	11
Verifying Option installation on Software	12
Assembly and Setup	13
Maintenance: Clean	19
Maintenance: Deck Adjustment	25
Maintenance: Adjust	26
Technical Service	29
Notes	30



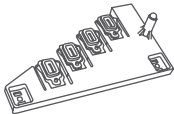
DESCRIPTION

With a few simple parts you can get a complete cleaning and parking system for your ink cartridges. This robust and easy to clean system allows to have the cartridge always ready to print.

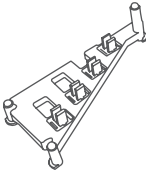
The parts include a built-in RFID to have a preventive maintenance system based on its use.

BOX CONTENT

Check the boxes to verify that all the packs are present.



x1 - Parking Station



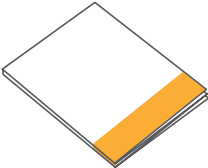
x1 - Cleaning Station



x4 - Ink trays



x1 - Latex gloves



x1 - Installation & Operation guide

x1 - Activation card



PREVIOUS REQUIREMENTS

- Verify that the plotter firmware version is higher than 6.0.0.0.

To find out your plotter's firmware version, go to:

Menu > Options > Info > Firmware versions

OPTION CARD



TDOT

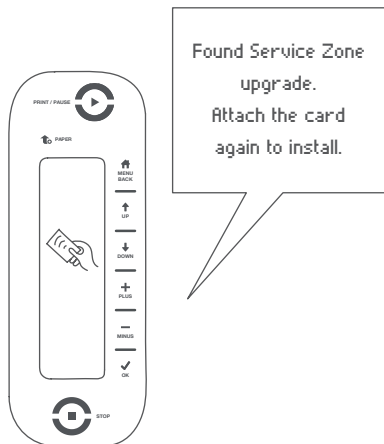
POWERFULLY REIMAGINED



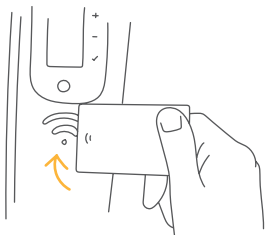
OPTION INSTALLATION



01. Get the option card and pass it through the RFID zone (on the right side panel) for at least 2 seconds, until you hear the acoustic signal.

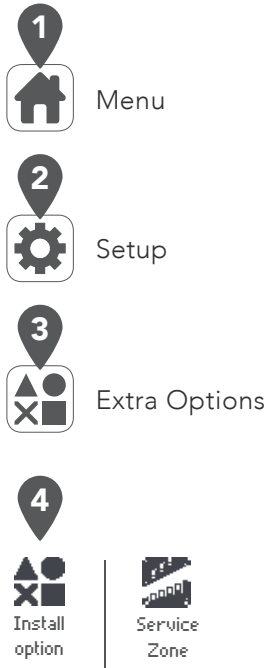


02. Check the verification message installation in the display.



03. Pass again the card to validate the installation, until you hear the acoustic signal.

VERIFYING OPTION INSTALLATION ON PLOTTER



On the plotter's Operator Panel Keyboard, press the Menu button. (1)

Select Setup and press OK. (2)

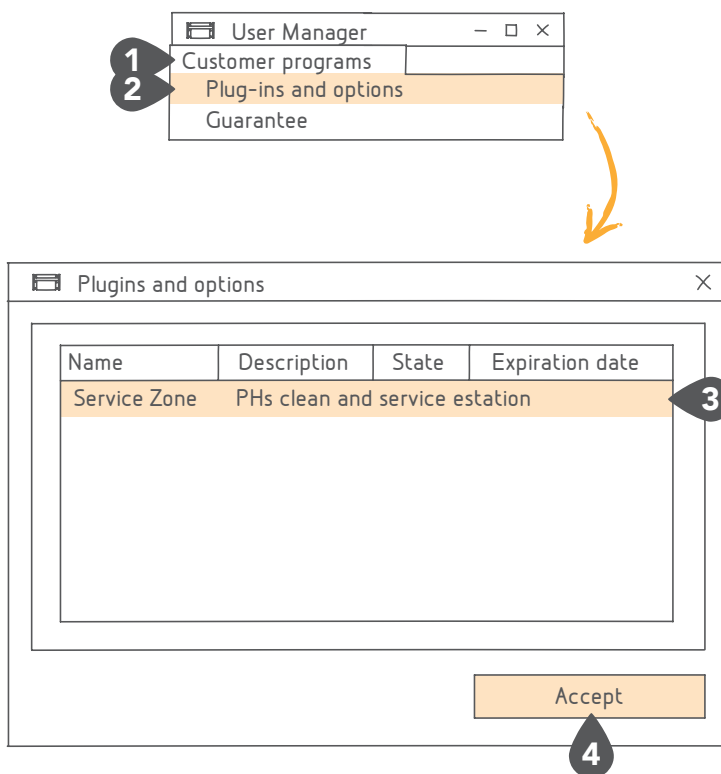
Select the Extra Options menu and press OK. (3)

Check the availability of the extra option **Service Zone** option. (4)

Press the Menu button to get back.

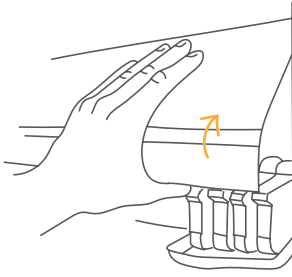
VERIFYING OPTION INSTALLATION ON SOFTWARE

In the Main User Manager screen select the “Customer Programs” (1) and select “Plug-ins and Options” (2). Check that the **Service Zone** option is correctly installed (3). Press Accept to exit (4).

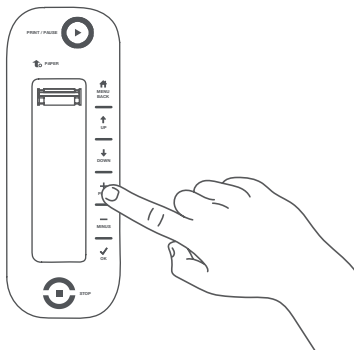


- * To verify the installation using the lan connection, the server must be configured previously.

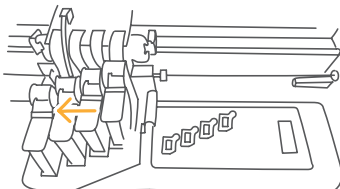
ASSEMBLY AND SETUP



01. Open the front cover.

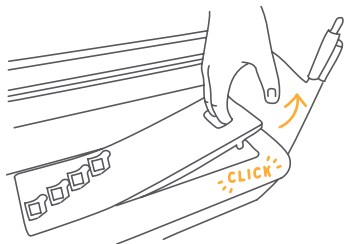


02. On the Operator Panel Keyboard, press and hold the + button on the keyboard to move the printhead to the left.

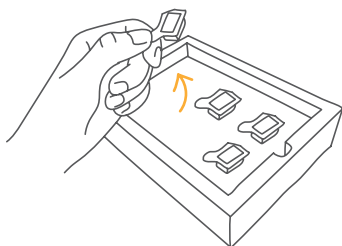


03. Move the printhead until it exposes the Service Zone Center.

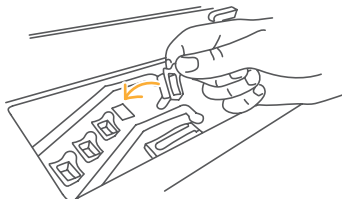
ASSEMBLY AND SETUP



- 04.** Remove the cover from the printing bridge.

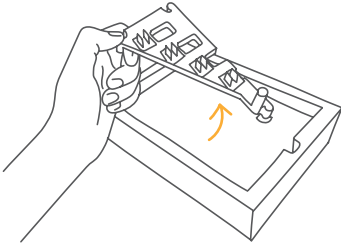


- 05.** Take out of the box the ink trays.

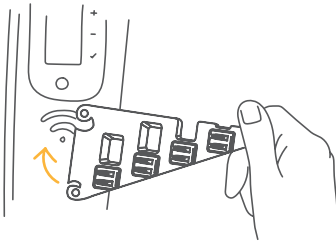


- 06.** Place the ink trays in the holes of the Service Zone.

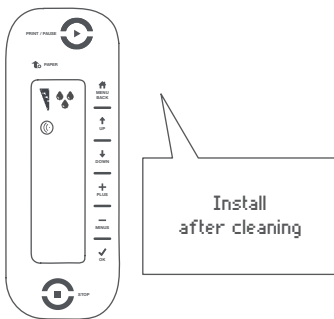
— Cleaning Station activation —



- 07.** Take out of the box the Cleaning Station.

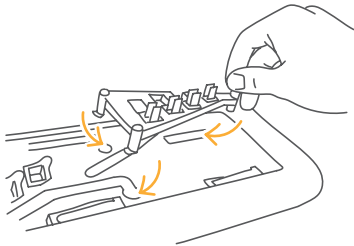


- 08.** Pass the Cleaning Station across the RFID zone to confirm cleaning process.

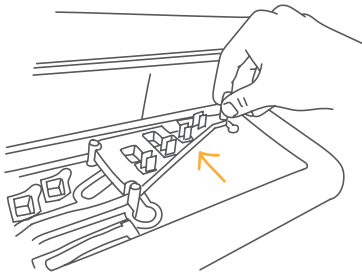


- 09.** Follow the display indications to confirm the cleaning process.

ASSEMBLY AND SETUP



10. Place the Cleaning Station in the grooves in the cleaning area.

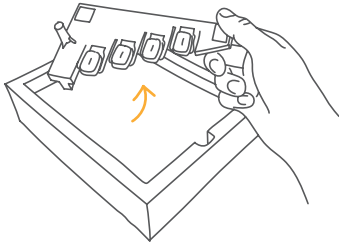


11. Slide the Cleaning Station towards the top following the grooves in the cleaning area.

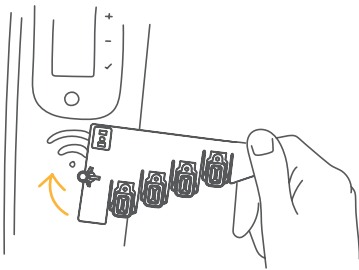


12. Slide the Cleaning Station to the left following the grooves in the cleaning area.
Make sure to slide the Cleaning Station to the very end of the left side.

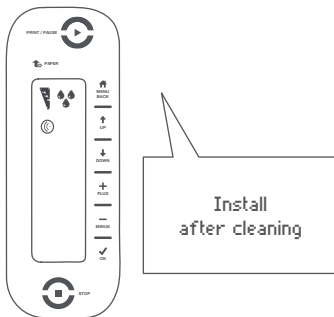
Parking Station activation



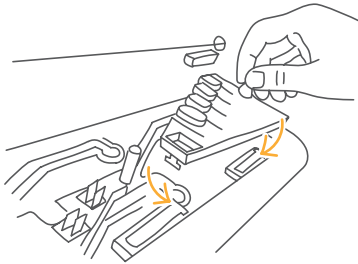
13. Take out of the box the Parking Station.



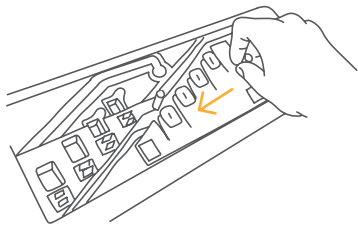
14. Pass the Parking Station across the RFID zone to confirm the cleaning process.



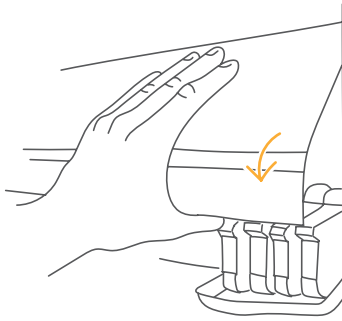
15. Follow the display indications to confirm the cleaning process.



- 16.** Insert the Parking Station into the grooves in the cleaning area.

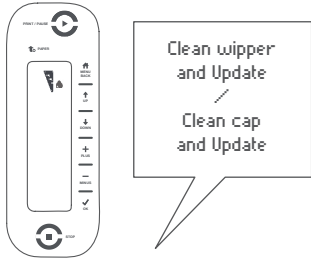


- 17.** Slide the Parking Station to the left following the grooves to the very end.

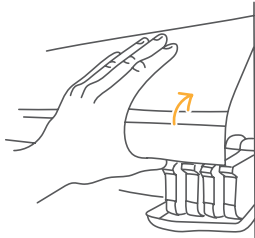


- 18.** Close the front cover.

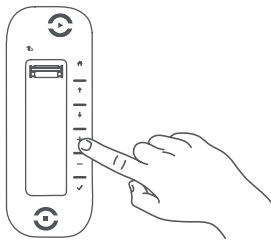
MAINTENANCE: CLEAN



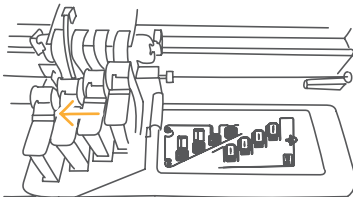
This message appears on the UWP display when the Parking Station is dirty and need to be cleaned.



01. Open the front cover.



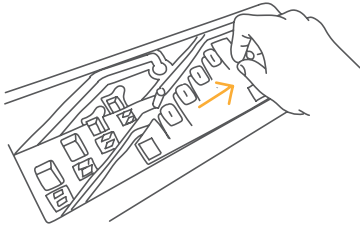
02. Press and hold the + button on the Operator Panel Keyboard to move the printhead to the left.



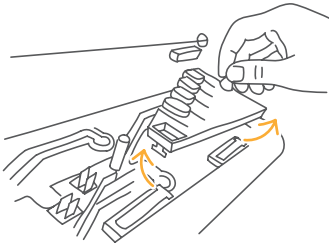
03. Move the printhead to expose the service zone.
Put gloves on.



MAINTENANCE: CLEAN



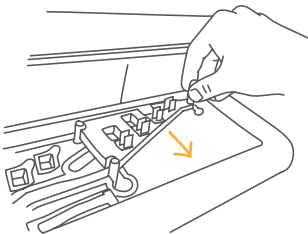
- 04.** Slide the Parking Station to the right along the grooves.



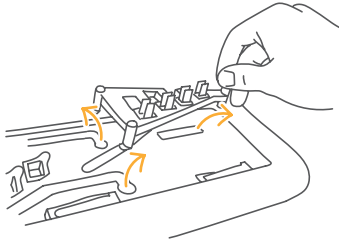
- 05.** Remove the Parking Station from the Service Zone.



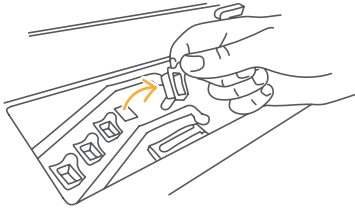
- 06.** Slide the Cleaning Station to the right along the grooves.



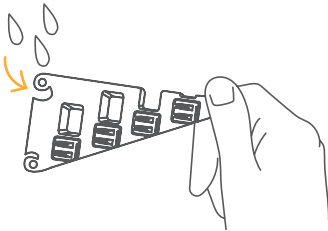
- 07.** Slide the Cleaning Station downwards along the grooves.



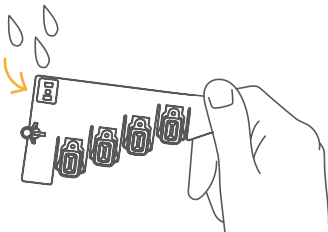
08. Remove the Cleaning Station from the Service Zone.



09. Remove the ink trays from the Service Zone.

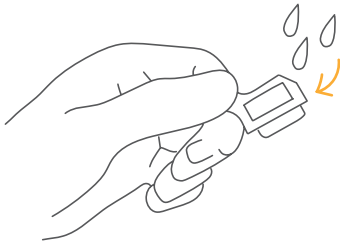


10. Use water only to clean the Cleaning Station.

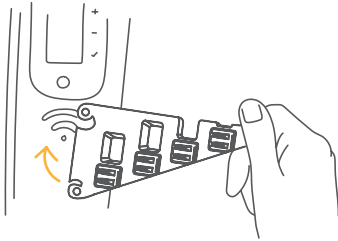


11. Likewise use water only to clean the Parking Station.

MAINTENANCE: CLEAN



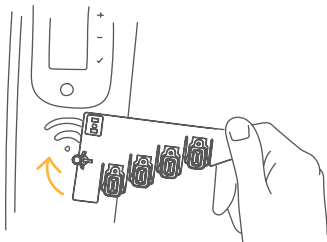
12. Likewise clean the ink trays using water only.



13. Pass the Cleaning Station across the RFID zone to confirm the cleaning process.



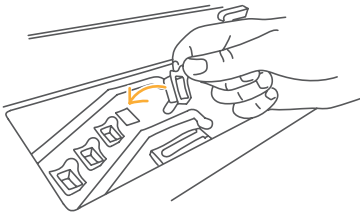
14. This message appears on the UWP display.



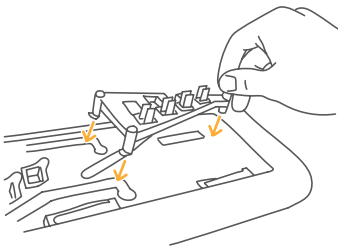
15. Pass the Cleaning Station across the RFID zone to confirm the cleaning process.



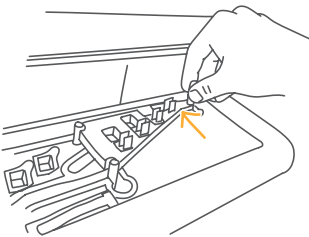
- 16** This message appears on the UWP display.



- 17.** Return the clean ink trays to their place in the cleaning area.



- 18.** Insert the Cleaning Station in the grooves of the cleaning area.

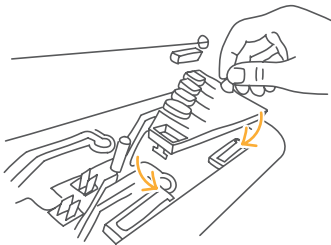


- 19.** Slide the Cleaning Station upwards along the grooves in the cleaning area.

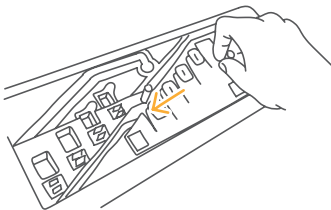
MAINTENANCE: CLEAN



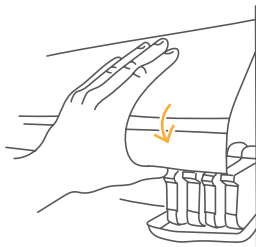
- 20.** Slide the Cleaning Station to the left along the grooves.



- 21.** Insert the Parking Station into the grooves.



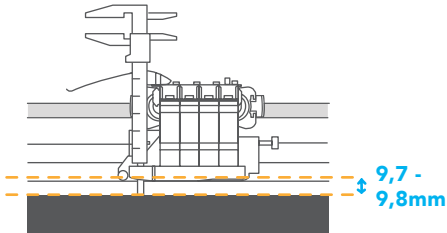
- 22.** Slide the Parking Station to the left along the grooves.



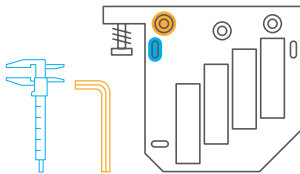
- 23.** Close the front cover.

MAINTENANCE: DECK ADJUSTMENT

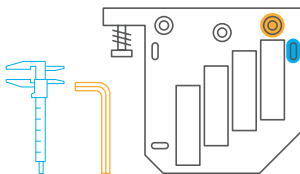
The Deck position affect to the the Service Zone.
Calibrate the plotter and pay attention to the parallelism adjust.



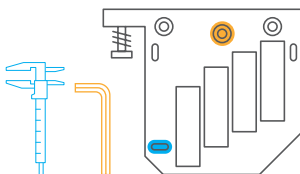
The Deck and the Bridge should be parallel. Its adjustable by measuring the gap between them at three measure points.



01. Measure and adjust as indicated.



02. Measure and adjust as indicated.



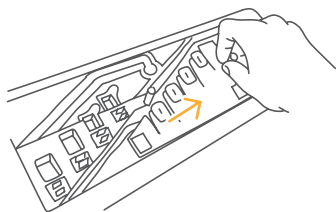
03. Measure and adjust as indicated.

Repeat the process to assure the parallelism adjust.

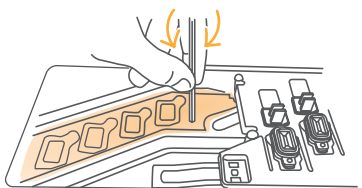
MAINTENANCE: ADJUST

TECHNICIAN LEVEL IS REQUIRED. ADJUST ONLY IF NECESSARY.

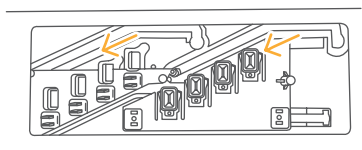
Service Zone base and Deck should be adjusted at the minimum distance without collision.



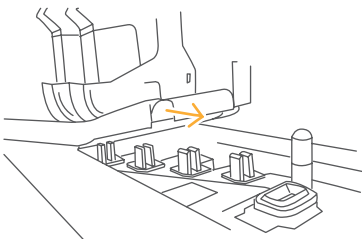
- 01.** Slide the Service Zone parts to the right along the grooves.



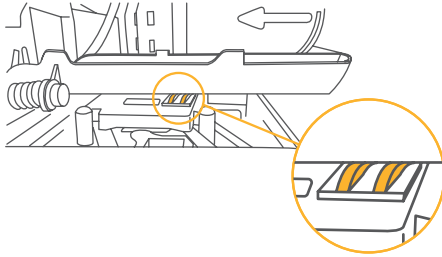
- 02.** Unscrew to adjust the height of the indicated zone.



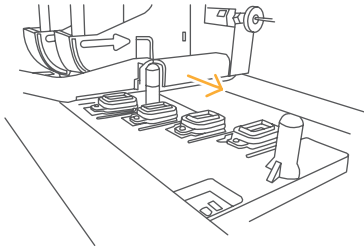
- 03.** Return the Cleaning Zone to its place.
Make sure to move it to the very end.



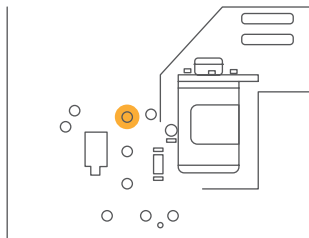
- 04.** The Cleaning Station should not collide with the Printing Carriage: Screw it until it's at the correct height.



- 05.** To make sure it isn't too low, check laterality. The Cleaning Station should wip the cartridges (1-1.5 mm interference).



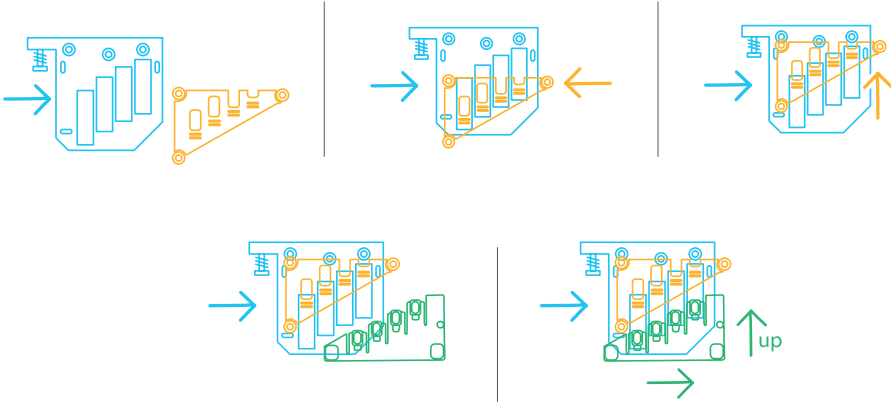
- 06.** The Parking Station should not collide with the Printing Carriage.



- 07.** Only if the Parking Station collide.
Unscrew slightly the indicated screw of the right bench.

MAINTENANCE: ADJUST

This schema can help you to understand the desired movements.



TECHNICAL SERVICE

Please contact your dealer for technical support in case of any issue.

The Service Zone is subject to wear away with the daily use and loses its cleaning properties over time. The recommendation is to replace it regularly. Contact your dealer for spare parts.

NOTES

204438_190701